

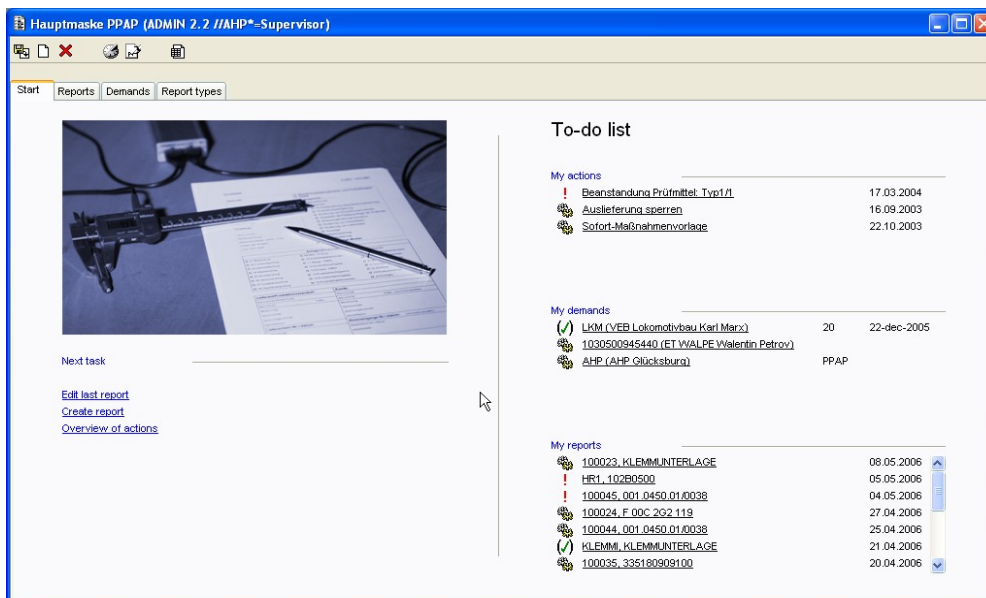
# PPAP / PPF

The relationship between customer and supplier is subject to constantly increasing quality and efficiency requirements, especially in the automotive sector. In order to keep up with this development, VDA and QS9000/ISO 16949 have defined the new processes "Production Process & Production Release Procedure (PPF)" and "Production Part Approval Process (PPAP)" as enhancements of the classical Initial Sample Inspection. These new processes clearly describe how the supplier has to be able to consistently prove the quality of its processes and products. The module iQ-PPAP/PPF meets the requirements of both procedures and efficiently supports the supplier concerned with PPAP/PPF in fulfilling his tasks.

## Workflow

iQ-PPAP/PPF supports the user in the planning, execution and documentation of all actions linked to a PPAP/PPF. Demands are available as planning elements that have already been set up to define who has to carry out a PPAP/PPF according to which method and for which customer. The latter is done within the central part of iQ-PPAP/PPF, the test report. This is where general data about the method, the supplier and the customer, the relevant template, test reports, actions, documents etc. are maintained and administrated – supported by the software wherever it makes sense. After completion of the PPAP/PPF the supplier has a comprehensive compilation of all certificates and documents as required by the chosen method. With this compilation the standard-conforming quality of all processes and products can be proven to the customer. The most important methods are delivered as demand catalogues with the submission levels defined for them. The can be edited by the user as new report types.

When working with iQ-PPAP/PPF, the user benefits from a handy overview of the actually important methods, demands and reports. The user has direct access to every element and can carry out the necessary editing.



## Overview of important functions

### General use of the software

- Quick overview of the methods, demands and reports relevant to the user, possibility to directly access every element
- One-click-access to the most recently used PPAP/PPF
- Demand-oriented planning of test reports
- Selective search for reports, demands and methods

### Report types/methods

- Preinstalled standard methods like e.g. PPAP and PPF

- Adding of new report types from scratch or by copying and editing of available methods/report types
- Maintaining a list of reasons for a report type
- Adding, editing and deleting of demands including the corresponding submission levels
- Detailed specification of demands with an extended text and a short description

### Reports

#### Setup

- Catalogue-supported choice of material the report is based on, the report type, the demanded submission level and the person responsible

- Automatic generation of the template (that applies to the demands catalogue relevant for the report) from the chosen report type and the submission level
- Tracking of a version number for the report
- When using demands transfer of all data defined in the respective demand

#### Administration data

- Choice of one or several reasons for the PPAP/PPF
- Catalogue-based declaration of the most important information about supplier and customer
- Detailed information about a possible sample delivery that describe the sample as well as the article on the customers side
- Subsequent change of data with note in the report history

#### Demands

- Concise presentation of demands
- Adding and editing of demands
- Automatic consideration of changed demands e.g. in the installations overview

#### Test report

- Planning of necessary tests and automatic generation of appropriate test orders
- Choice of single component to be tested from a bill of materials (for complex materials)
- Overview of states for test orders
- Checking, cancellation and editing of test orders

#### Parts characterisation and ingredients

- Classification of part and IMDS numbers

- Alternatively for IMDS numbers: possibility to exactly itemise all material components with automatic transfer from the bills of materials (see also iQ-GL)
- Environment- and security-related classification of ingredients by means of a checklist and declaration of an additional description with a detailed text

#### Actions

- Creating immediate actions directly within a report (see also *iQ-Projekte*)
- Concise listing of all associated actions stating action state, person responsible and due date

#### Gauges

- Setting up any number of gauges
- Transfer of gauges from test
- Access to gauge administration (*iQ-PMV*)

#### Enclosures (documents)

- Simple adding and storing of any type of documents (see *iQ-Doku*) and assignment of a document to an installation type
- Direct editing of documents assigned
- Distribution and printing of documents – also in PDF format
- Use of templates (e.g. from Word and Excel)

#### Customer decision

- Detailed overview of the customer decision
- Note of decision for every installation
- Detailed description for customer explanation
- Release

#### Interfaces to other modules

- *iQ-EMP* for automatic setup of tests and their execution
- *iQ-CAD-Interface*, if you want/need to execute tests directly within CAD drawings
- *iQ-Doku* for all aspects of document management
- *iQ-PMV* for administration of test equipment used and tracking & tracing regarding test equipment quality
- *iQ-Projekte* for setup and automatic tracing of actions