

# Supplier Evaluation

Products are becoming increasingly powerful and ambitious. Nowadays, hardly any company manufactures all of a product's components itself. Close cooperation involves suppliers in all phases of the product, from design to disposal. Supplier evaluation (**iQ-LIEFBEW**) helps to assess a supplier in terms of quality indicators such as quality, logistics, price, and service/systems, as well as different reports.

## Workflow

The supplier-related modules provide condensed data on delivery quality to the **iQ-LIEFBEW** module. The data is then evaluated and classified using a defined procedure. The evaluation is carried out in a variety of ways, using standard overviews and statistics wherever possible. These cover the general requirements, but **iQ-INFO** also provides users with a system that allows them to answer their own questions in overviews, graphics, or even forms.

## Important Features at a Glance

### Different Perspectives

#### Delivery history of a supplier

- Items delivered by a supplier; individually and in summary for a period of time
- Delivery reliability for items from a supplier
- All deliveries with summary of results

#### Delivery history of an item

- All suppliers of an item with a quality rating
- Monthly evaluation
- Hit list of suppliers
- Delivery reliability of suppliers in comparison

### Quality Assessment from Inspections

#### Initial sampling inspection

- Reason for the inspection, e.g., initial delivery, new change index, etc.
- Summary of measurement results for each characteristic
- Scope of the inspection
- Reference to the inspection order
- Usage decision for dimensional accuracy, material, and function; overall decision on use

#### Incoming goods inspection, event-driven IGI, re-examination

- Inspection order, inspection plan
- Evaluation for each characteristic as well as summary of measurement results
- Events of the inspector

### Display of Quality Indicators

Summary evaluation of a supplier (weighting and evaluation). The quality data comes from the usage decisions of the inspections, supplier complaints (8D reports), ppm evaluations, and supplier audits of the iQ-BASIS modules, as well as from manually added assessments. You can create your own evaluation catalogs. The following are available as standard:

#### Logistics

- Deadline reliability
- Quantity reliability
- Delivery quality

#### Quality

- Initial sampling
- Series parts
- Complaints
- Customer complaints

#### Service

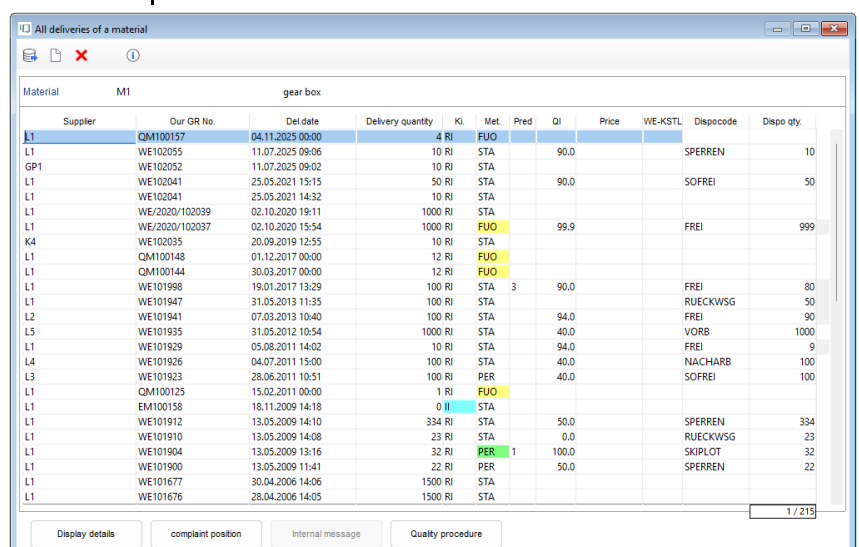
- Goodwill
- Due date 8D report
- Repairs etc.

#### Price

- Price comparison
- Price stability

#### Overviews of all inspection orders for the parts/supplier's combination, complete delivery history

- Initial sample
- Incoming goods
- Skip lots – Assumptions without inspection



Supplier	Our GR No.	Del date	Delivery quantity	KI	Met	Pred	Qi	Price	WE-KSTL	Dispcode	Dispo qty.
L1	QM100157	04.11.2025 00:00	4 RI	FIJO							
L1	WE102055	11.07.2025 09:06	10 RI	STA			90,0			SPERREN	10
GP1	WE102052	11.07.2025 09:02	10 RI	STA							
L1	WE102041	25.05.2021 15:15	50 RI	STA			90,0			SOFREI	50
L1	WE102041	25.05.2021 14:32	10 RI	STA							
L1	WE/2020/102039	02.10.2020 19:11	1000 RI	STA							
L1	WE/2020/102037	02.10.2020 15:54	1000 RI	FUJO			99,9			FREI	999
K4	WE102035	20.09.2019 12:55	10 RI	STA							
L1	QM100148	01.12.2017 00:00	12 RI	FUJO							
L1	QM100144	30.03.2017 00:00	12 RI	FUJO							
L1	WE101998	19.01.2017 13:29	100 RI	STA	3		90,0			FREI	80
L1	WE101947	31.05.2015 11:35	100 RI	STA						RUECKWSG	50
L2	WE101941	07.03.2015 10:40	100 RI	STA			94,0			FREI	90
L5	WE101935	31.05.2012 10:54	1000 RI	STA			40,0			VORB	1000
L1	WE101929	05.08.2011 14:02	10 RI	STA			94,0			FREI	9
L4	WE101926	04.07.2011 15:00	100 RI	STA			40,0			NACHARB	100
L3	WE101923	28.06.2011 10:51	100 RI	PER			40,0			SOFREI	100
L1	QM100125	15.02.2011 00:00	1 RI	FUJO							
L1	EM100158	18.11.2009 14:18	0 RI	STA							
L1	WE101912	13.05.2009 14:10	334 RI	STA			50,0			SPERREN	334
L1	WE101910	13.05.2009 14:08	23 RI	STA			0,0			RUECKWSG	23
L1	WE101904	13.05.2009 13:16	32 RI	PER	1		100,0			SKIPILOT	32
L1	WE101900	13.05.2009 11:41	22 RI	PER			50,0			SPERREN	22
L1	WE101677	30.04.2006 14:06	1500 RI	STA							
L1	WE101676	28.04.2006 14:05	1500 RI	STA							

- Review
- Event-driven checks (error analyses from quality notifications)

- Reports of all/individual parts of a delivery
- Reports of all/one supplier for a part

*Display of Q key figures (VDA, Bosch) and ppm evaluation (list, graph)*

- Monthly statistics QKZ, ppm
- Target specifications from ppm contracts
- Reference to the inspection order
- Multiple different material dispositions per usage decision
- Specification of quantity, disposition (free, return delivery, etc.) and complaint (OK, no dimensional accuracy, etc.)
- Evaluations by the dispatcher in the form of standard texts

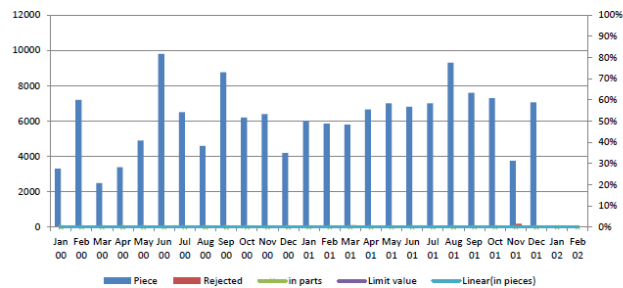
Various statistical analyses

- Monthly quality indicators for suppliers per item
- Monthly quality indicators for supplier items
- Monthly statistics for ppm evaluations
- Pareto analysis of error types
- Complete evaluations of history and disposition
- List of the worst parts
- Evaluations for Bosch assessment procedures
- Throughput times of inspection lots
- Overviews for articles with ppm specifications
- Incoming goods overview with free choice statistical reports (incl. export) with various selection criteria
- Monthly statistics on complaints/supplier comparison
- Custom reporting; the customer can use the e.g. Crystal reporting system to create statistics, graphs, forms and reports

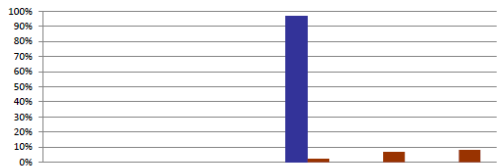
**Supplier Evaluation**

Quality, Logistics und Service

Supplier: Ladendorf GmbH  
 Period: 01.01.2000 - 27.02.2002 Supplier no.: L1



Goods receipts: 87 Sum of parts: 147860  
 Complaints: 21 Rejected quantity: 877  
 Individual assessment 'Quality %': 90,6 Estimation: B

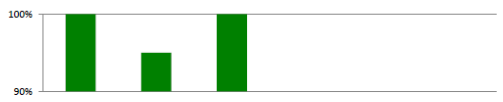


Delivery date constancy	> 6 days early	up to 6 days early	up to 3 days early	up to 1 day late	up to 2 days late	up to 3 days late
Individ. assessment %:	0	80	90	100	95	90
Number of deliveries:	0	0	0	84	0	0

quantity of delivery	nothing delivered	up to 80% underdelivered	up to 60% underdelivered	up to 40% underdelivered	up to 20% underdelivered	up to 10% underdelivered
Individ. assessment %:	0	20	40	60	80	90
Number of deliveries:	0	0	0	2	6	7

Reference values are the order items with quantity and date.

Delivery date constancy(41.7%):  
 quantity of delivery(41.7%):  
 Individual assessment 'Logistics %': Estimation: B



Annual assessment of soft factors by various departments	Service (13,3%)	Service (%)	Service (%)	Service (%)	Service (%)	Service (%)
Individual assessment 'Service %':	100	95	100	90		
Estimation:	A					

Overall evaluation %: 92,5 Classification: B

**Interfaces to other Modules**

- iQ-WEP on usage decisions from incoming goods inspections
- iQ-FEP by the ppm evaluations
- iQ-EMP on Quality decisions
- iQ-QMS results from 8D-Reports

	<b>ABC-Bewertung</b>	Datum	30.04.2004				
	<b>Materialliste</b>	Seite	Seite 1 von 1				
Lieferant	L1	Ladendorf GmbH					
Zeitraum	01.01.2001	-	30.04.2004				
<b>Gesamtergebnis aller Lieferungen</b>							
	Lieferungen	%	Menge %				
A-Lieferungen	48	100,0	80.355 100,0				
B-Lieferungen	0	0,0	0 0,0				
C-Lieferungen	0	0,0	0 0,0				
<b>Detailergebnisse nach Artikel</b>							
Klasse	Material	Bezeichnung	Anzahl WE's	gelieferte Menge	Aussch. Menge	QKZ	PPM
A	DI01	Dichtung Form 01	2	700	0	100,0	0
A	H1	Gusskörper 102B0500	1	10	0	100,0	0
A	M1	Getriebegehäuse	35	62.495	23	100,0	368
A	M2	Gehäusedeckel	10	17.150	436	97,5	25.423
<b>Gesamt</b>			<b>48</b>	<b>80.355</b>	<b>459</b>	<b>99,5</b>	<b>5.712</b>

